

I-395 HIGH-OCCUPANCY VEHICLE (HOV) ROCHAMBEAU MEMORIAL BRIDGE

REHABILITATION PROJECT (BRIDGE 169-1)

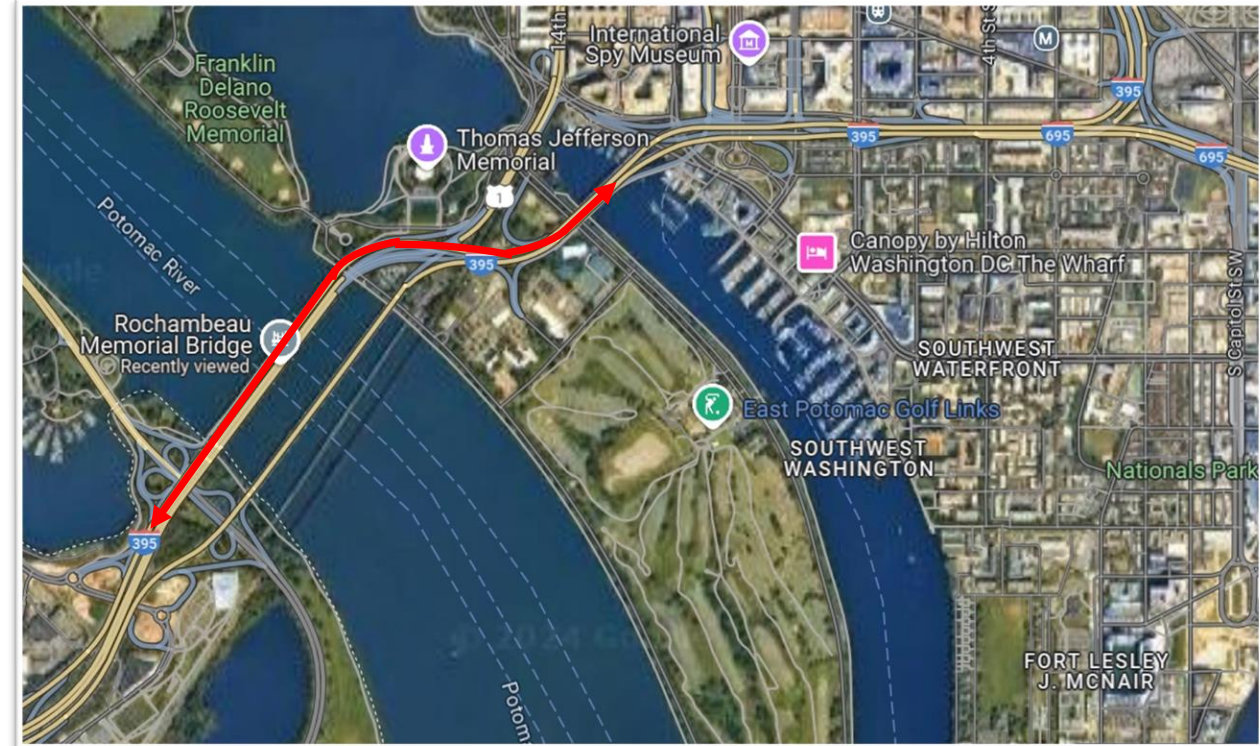
**Advisory Neighborhood Commission 6D
Presentation
September 9, 2024**

Agenda

- Introduction of Attendees
- Project Overview
- Project Goals
- Timeline
- Questions

Project Overview

- DDOT completed the rehabilitation design of the I-395 HOV Bridge over the Potomac River, also known as Rochambeau Memorial Bridge.
- This bridge is one of three parallel structures that carry I-395 traffic between the District of Columbia and Virginia.
- The bridge carries an average of 75,000 vehicles each weekday.
- WMATA bus lines, 16C and 16E, travel across the bridge on weekdays and weekends.



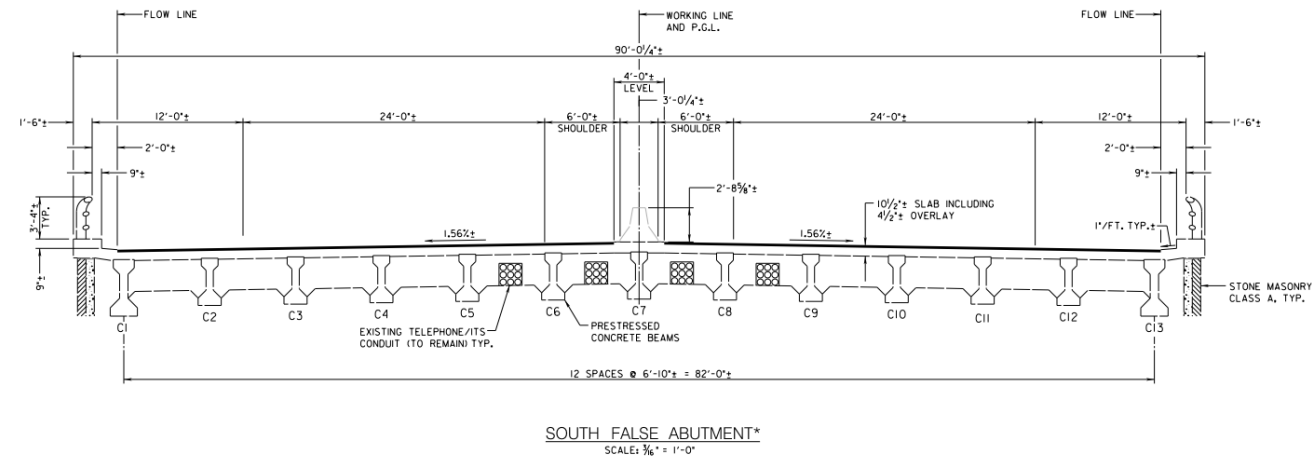
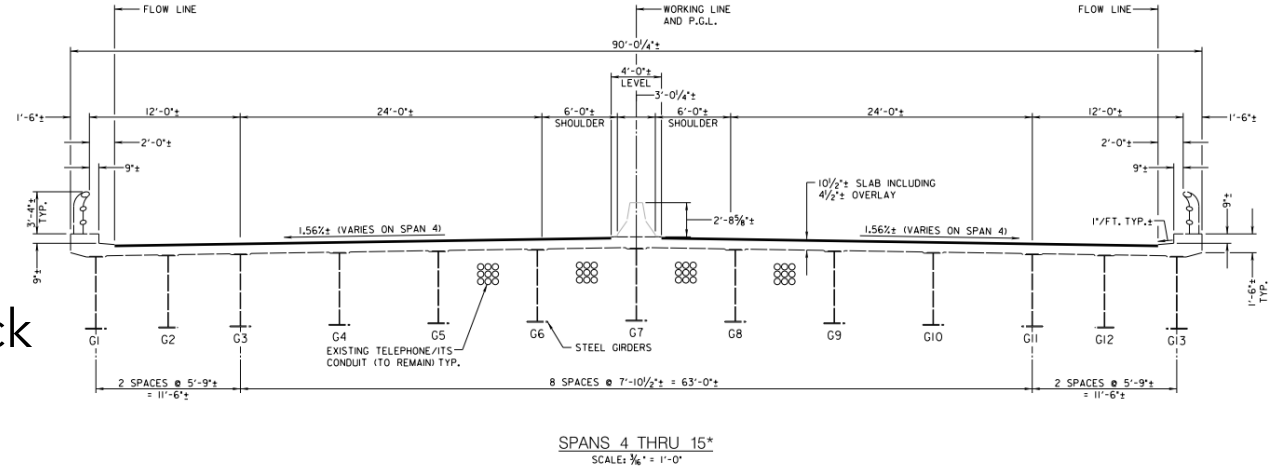
Key Project Goals

- Address all deficiencies and improvement/repair schemes
- Extend the service life of the structure for an additional 40 years
- Improve the safety features of the existing structure
- Preserve the aesthetic harmony with the adjacent bridge
- Preserve the structure's good condition



Project Timeline

- Construction duration: 545 days
- Construction will begin in late fall 2024
- Anticipated Completion: Late Spring 2026
- Three Phases of construction on bridge deck
- Anticipated Traffic Switches
 - Phase 1: November 2024
 - Phase 2: April 2025
 - Phase 3: August 2025

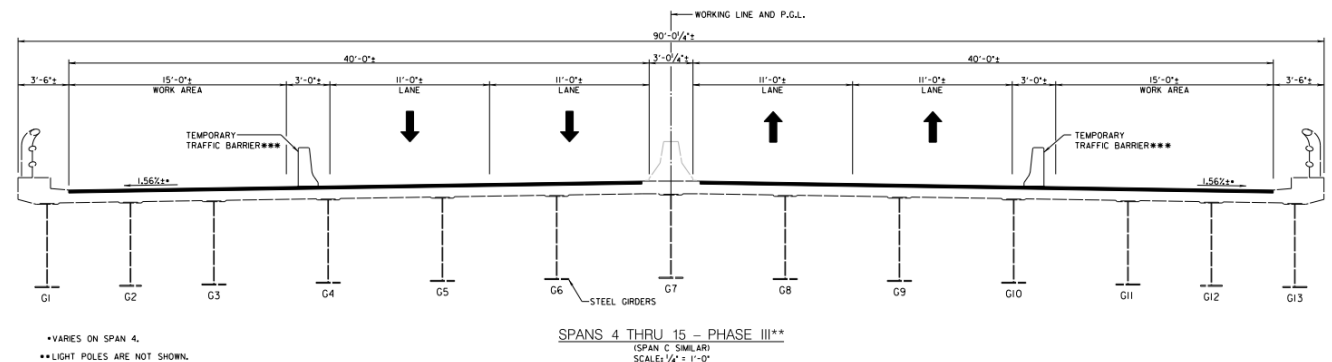
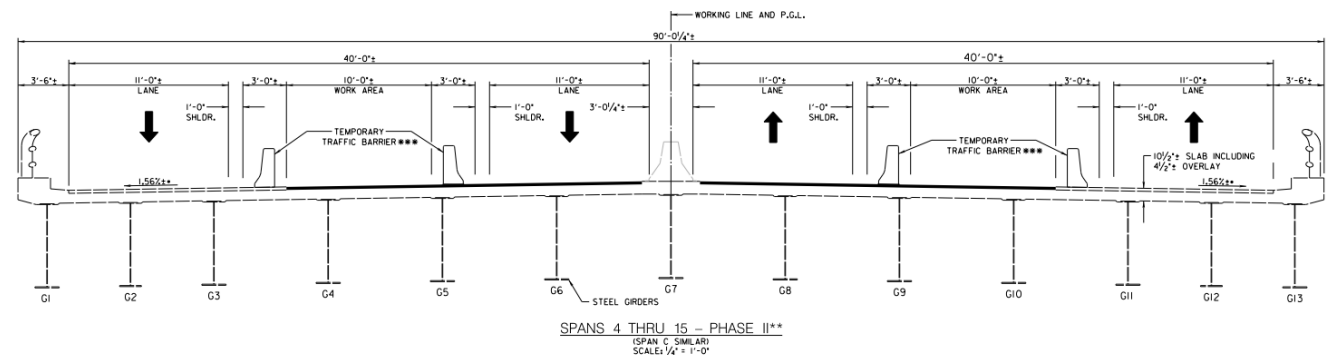
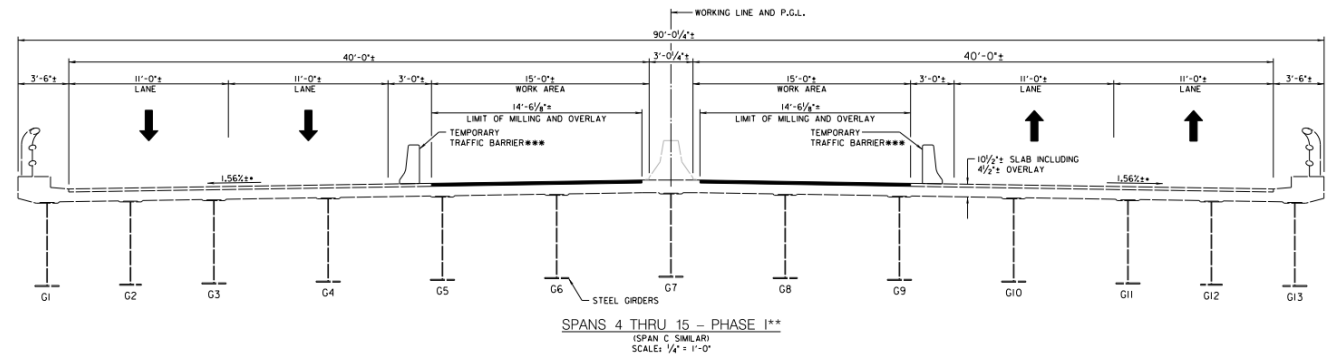


N
I.

STONE MASONRY
CLASS A, TYP.

Proposed Repairs & Traffic Impacts

- 3 phases of concrete deck replacement
- Bearing replacement / repair
- 2 Lanes will be open in each direction, speed limit reduced to 35 MPH
- Single lane closures
 - 9:30pm to 4:00am (weekdays)
 - 11:00 pm to 9:00am (weekends)
- Complete Lane Closures
 - 11:00 pm to 4:00 am
 - 30-minute full closures



**VARIES ON SPAN 4.
**LIGHT POLES ARE NOT SHOWN.

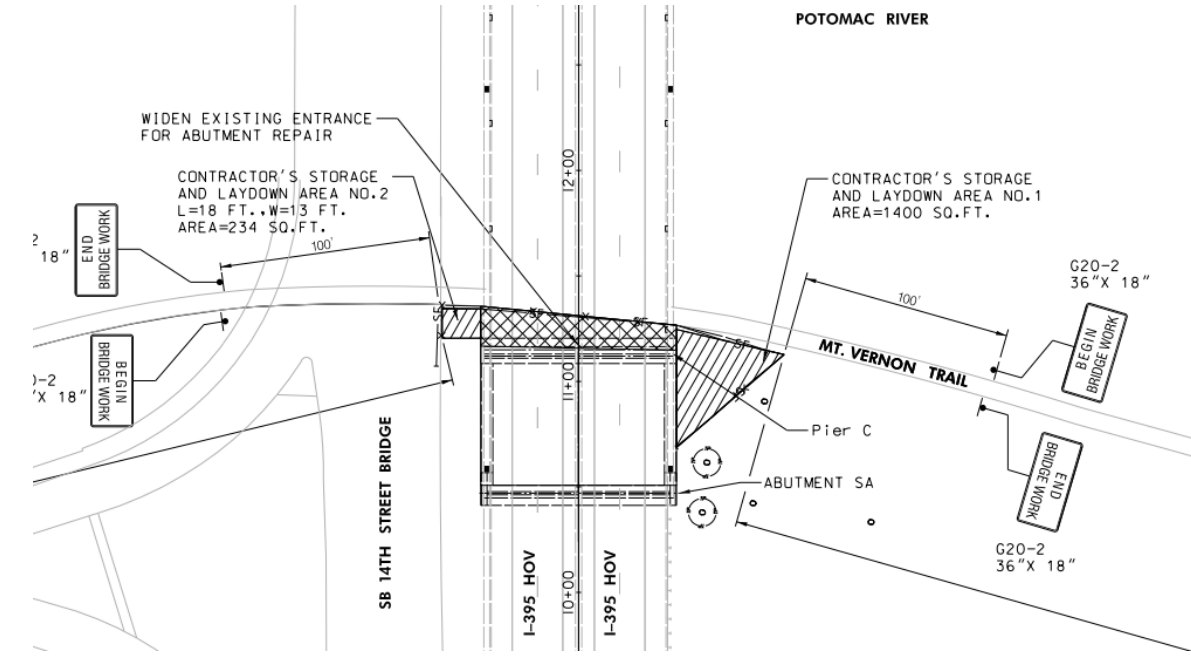
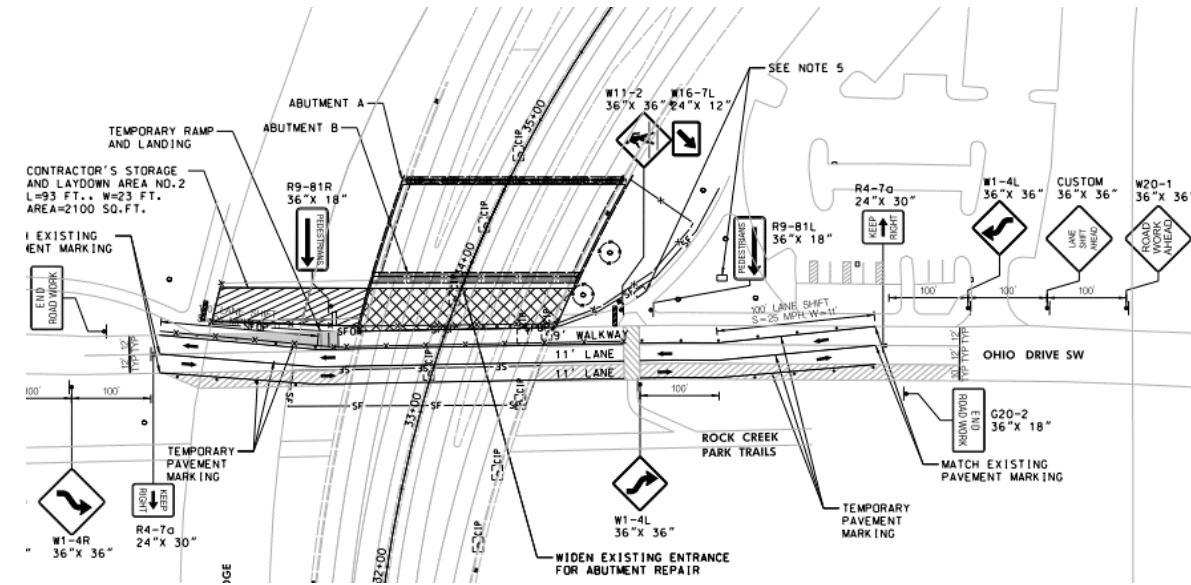
What Can You Expect?

- **Maintenance of Traffic**

- Maintain two lanes of traffic at all times during daytime hours
- Use of variable message signs
- Emergency / accident response measures in place

- **Staging Areas**

- Serve as laydown areas for bridge materials, construction vehicles, and equipment.
- Mount Vernon trail will remain open during construction, pedestrian traffic will be detoured.
- Ohio Drive will remain open during construction
- ADA compliance maintained during construction
- Safe pedestrian access



Questions

Outreach and Engagement

Staying Connected



SCAN ME

Community Outreach:

Enora Moss

enora@tbaconnects.com

423-355-3843

Construction Manager:

Lindsay Booher

lbooher@wrallp.com

 Visit the website

1395hov.ddot.dc.gov

d.

District Department of Transportation